



JAYSHREE AROMATICS PVT LTD

(100% EOU)

(Manufacturers of Aromatics & Fine Chemicals)

PLOT NO.: 4705/1/3, G.I.D.C., ANKLESHWAR- 393 002,
DI5T. BHARUCH, (GUJARAT) INDIA

* PHONE: 91-2646-224211, * FAX: 91-2646-252718

E-mail: info@jayshreeind.com

Website: www.jayshreeind.com

PRODUCT INFORMATION

PHENYL ETHYL METHYL ETHER

1.0 IDENTIFICATION OF THE SUBSTANCE/PREPARATION AND OF THE COMPANY/UNDERTAKING

Product Name Phenyl ethyl Methyl Ether
Chemical Name of Active Ingredient

2- Methoxy ethyl Benzene

Manufacturer : Jayshree Aromatics Pvt Ltd
,plot no..4705/1/3 GIDC Estate, Ankleshwar-393002.
District Bharuch . Gujarat.

Phone no. 91-2646-22411

Fax- 91-2646-252718

Email : jayshreeind@narmada.net.in
info@jayshreeind.com

Emergency Telephone number:-

Ankleshwar-91-2646-224211

Cell phone -09825031954

2.0 PRODUCT IDENTIFICATION & COMPOSITION/INFORMATION ON INGREDIENTS

Synonyms:

Pandanol,

(2-Methoxyethyl)benzene

1-Methoxy-2-phenylethane

2-Phenethyl methyl ether

2-Phenylethyl methyl ether

4-06-00-03069 (Beilstein Handbook Reference)

BRN 1857538

Benzene, (2-methoxyethyl)-

Ether, methyl phenethyl

Kedwa ether

Kewda ether

Methyl 2-phenethyl ether

Methyl phenethyl ether

Methyl phenethyl oxide

Methyl phenylethyl ether

NSC 81229

3.0 PHYSICAL CHEMICAL PROPERTIES

Appearance :- Colorless Clear Oily Liquid

Occurrence in nature:- :- However ,it is a Synthesized chemical

Odor: - Green. Floral, Chrysanthemum Jasmine Metallic rose ,Etheral,fruity,Hyacinth like, T

The odour is very powerful, diffusive & penetrating.

When un diluted grassy ,pungent , & in dilution jasmine, tuberose type,floral,sweet & rosy

Flavours:- Penetrating floral,Spicy,green Flavour & honey like on dilution

Solubility: 1 in 6 (60% Alcohol)

Relative Density@25°C : 0.951 to 0.960

Refractive Index@20°C : 1.4970 to 1.5060

% volatile by volume:- 100%

Typical Purity(GC) : Not less than 98.5 %-

Boiling point: 185.00 °C atmospheric

Acid Value:- < 1

Flash Point:- TCC (>66 °C.)

4.0 OTHER INFORMATION

Standard Packing size:-5.0 kgs,30 kgs & 200 kgs

Packing material compatibility details:-

Compatible with Good HDPE, Galvanized

Phenethyl methyl ether
Phenylethyl methyl ether
UNII-79089Z2R3S
(2-Methoxyethyl)benzene
Benzene, (2-methoxyethyl)-
Ether, methyl phenethyl

CAS No. 3558-60-9

Molecular wt :- 136.21

FEMA No. :- 3198

EINECS :- 222-619-7

CoE :- 11182

JECFA number 1254

FL Number 03.006

Chemical Formula :- C₉H₁₂O

HS No. :- 2909 30 1900

Beilstein Number/ /Gmelin 1857538

MDL number: MFCD00025912

WHMIS (Canada): Not Available

BEILSTEIN REFERENCE 4-06-00-03069

CANADA DSL/NDL DSL

US TSCA Listed

AUSTRALIA AICS Listed

NEW ZEALAND Listed

JAPAN ENCS (MITI) Listed

KOREA ECL Listed

PHILIPPIENS PICCS Listed

FOOD CHEMICALS CODEX LISTED No

logP (o/w) : 2.14

Iron drums, HDPE Carboys, Aluminium Cans.

Head Space:-As low as possible

Product Use: - Synthetic Flavouring agent & Fragrance in Cosmetics, .It is used as powerful & lifting ingredient in Hyacinth, Rose, Jasmin,Lilac.Pikake or other heavy exotic floral.

It is used in preparation of artificial Pandanus oil also known as KEWDA or KEORA oil.

Tenacity:- >88 HRS

Use Level:- fragrance up to 5 %

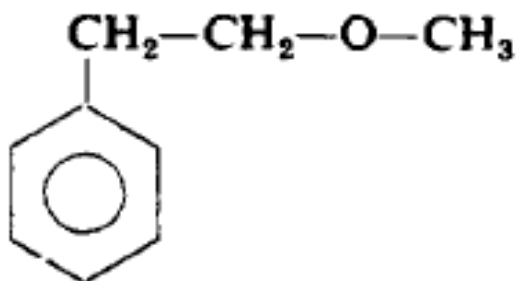
Stability: - Keep in tightly closed container in a cool and dry place, protected from light.

When stored for more than 12 month's quality should be checked before use.

| | | | |
|---------------------|----|----------------------|----|
| PH 1 | - | ANTIPERSPIRANT | ++ |
| PH 2 | + | FABRIC SOFTENER | ++ |
| PH 3 | ++ | ALCOHOLIC LOTION | ++ |
| PH 4 | ++ | HAND CREAM | ++ |
| PH 5 | ++ | LIQUID DETERGENT | ++ |
| PH 6 | ++ | SHAMPOO | ++ |
| PH 7 | ++ | AEROSOL | ++ |
| PH 8 | ++ | FOAM BATH | ++ |
| PH 9 | ++ | BLEACHING AGENT | ++ |
| PH 10 | ++ | TALCUM | ++ |
| PH 11 | ++ | SOAP | ++ |
| PH 12 | + | HARD SURFACE CLEANER | ++ |
| ACID CLEANER LIQUID | - | DETERGENT (+TAED) | + |
| ACID CLEANER SOLID | - | DETERGENT PERBORATE | ++ |
| TILE CLEANER | + | SOFTENING AGENT | ++ |
| CREAM RINSE | ++ | COLD WAVE | ++ |
| DEO STICK | ++ | | |

WGK Germany : 3

JAPL CODE OF PRODUCT : P0026



Also level of metals as follows

Copper <20ppm

Arsenic <1.1 ppm

Tin <250ppm

Zinc <50ppm

Cadmium <1 ppm

Mercury 1 PPM

Lead <1 PPM

Methyl Mercury calculated as element <0.25 ppm