



# JAYSHREE AROMATICS PVT LTD

(100% EOU)

(Manufacturers of Aromatics & Fine Chemicals)

PLOT NO.: 4705/1/3, G.I.D.C., ANKLESHWAR- 393 002,

DI5T. BHARUCH, (GUJARAT) INDIA

\* PHONE: 91-2646-224211, \* FAX: 91-2646-252718

E-mail: [info@jayshreeind.com](mailto:info@jayshreeind.com)

Website: [www.jayshreeind.com](http://www.jayshreeind.com)

## PRODUCT INFORMATION PHENYL ETHYL ISO BUTYRATE

### 1.0 IDENTIFICATION OF THE SUBSTANCE/PREPARATION AND OF THE COMPANY/UNDERTAKING

#### Product Name

PHENYL ETHYL ISO BUTYRATE

#### Chemical Name of Active

2-PHENETHYL ISOBUTYRATE

**Manufacturer :** Jayshree Aromatics Pvt Ltd  
,plot no..4705/1/3 GIDC Estate, Ankleshwar-393002.  
District Bharuch . Gujarat.  
Phone no. 91-2646-22411  
Fax- 91-2646-252718  
Email :[info@jayshreeind.com](mailto:info@jayshreeind.com)

#### Emergency Telephone number:-

Ankleshwar-91-2646-224211  
Cell phone -09825031954

### 2.0 PRODUCT IDENTIFICATION & COMPOSITION/INFORMATION ON INGREDIENTS

#### Synonyms...

2-Phenylethyl 2-methylpropanoate  
2-Phenylethyl 2-methylpropionate  
2-Phenylethyl isobutyrate  
4-06-00-03073 (Beilstein Handbook Reference)  
A13-18545 , BRN 2330243  
Benzylcarbonyl isobutyrate  
Benzylcarbonyl 2-methylpropanoate  
Benzylcarbonyl isobutyrate  
Isobutyric acid, phenethyl ester,  
Phenethyl 2-methylpropanoate  
Phenethyl 2-methylpropionate  
Phenethyl isobutyrate  
Phenethyl isobutyrate (natural)  
Phenylethyl isobutyrate  
Propanoic acid, 2-methyl-,

### 3.0 PHYSICAL CHEMICAL PROPERTIES

**Appearance** :- clear mobile colorless liquid

**Occurrence in nature:- :-**

However ,it is a Synthesized chemical

**Odor** : - Refreshing. More fruity than rosy,  
sweet, honey, floral, winey, pea and overall fresher than the  
n-Butyrate, chocolate nuance

**Flavours:-**. sweet, fruity, honey, floral, pear, wine-like

**Solubility:** 1 in 5 (60% Alcohol)

**Relative Density@25°C** 0,985 - 0,995

**Refractive Index@20°C** 1,4850 - 1,4900

**% volatile by volume:-** 100%

**Typical Purity(GC)** Not less than 98%

**Ester content ;-** Not less than 98%

**Boiling point 250: °C** atmospheric

**Acid Value:-<** 1

**Vapor density (Air=1) :->** 1

**Flash Point:-** 108 °C

### 4.0 OTHER INFORMATION

**Standard Packing size:-**5.0 kgs,35 kgs &215 kgs

**Packing material compatibility details:-**  
Compatible with Good HDPE, Galvanized

2-phenylethyl ester

UNII-QRZ4RE7DCL.

CAS No. 103-48-0

Molecular wt :- 192.25

FEMA No. :- 2862

EINECS :- 203-116-1

CoE :- 302

USA Food & Drug Act Title 21 CFR Paragraph  
172.515

JECFA number 992

FL Number 09.427

Chemical Formula :- C12 H16 O2

HS No. :- 2915 60 1000

Beilstein Number/ /Gmelin 2330243

MDL number: MFCD00026441

PubChem Substance ID 24901353

**RTECS :** NQ5435000

**BEILSTEIN REFERENCE**  
4-06-00-03073

**CANADA DSL/NDL** DSL

**US TSCA** Listed

**AUSTRALIA AICS** Listed

**NEW ZEALAND** Listed

**JAPAN ENCS (MITI)** Listed

**KOREA ECL** Listed

**PHILIPPIENS PICCS** Listed

**FOOD CHEMICALS CODEX LISTED** yes

**logP (o/w) : 3.18**

Iron drums, HDPE Carboys, Aluminium Cans.

**Head Space:-**As low as possible

**Product Use :-** in fruity-floral compounds for all purposes  
This ester finds as much use in perfumery as  
Does the n-Butyrate. The title ester is used for Jasmin,  
Hyacinth, Rose, Peony and many other fruity-floral  
types, also in Gardenia, Honeysuckle, Frangipani,  
Etc. Trace quantities give a characteristic freshness to light  
florals. Larger quantities impart fruitiness to rose  
compounds.

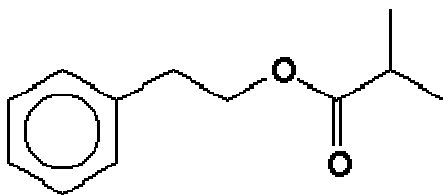
In flavors, it finds use for imitation Apple,  
Peach, Pineapple, Strawberry, Honey, Cheese,  
And in various floral and fruity complexes.  
Fruity red, fruity tropical, sweet others, alcoholics.

**Use Level:-** fragrance up to 12 %  
Flavours up to 150 ppm

**Stability: -** Keep in tightly closed container in a cool and dry  
place, protected from light.  
When stored for more than 12 month's quality should be  
checked before use.

PH 1	+	ANTIPERSPIRANT	++
PH 2	+	FABRIC SOFTENER	++
PH 3	++	ALCOHOLIC LOTION	++
PH 4	++	HAND CREAM	++
PH 5	++	LIQUID DETERGENT	++
PH 6	++	SHAMPOO	++
PH 7	++	AEROSOL	++
PH 8	++	FOAM BATH	++
PH 9	++	BLEACHING AGENT	+
PH 10	++	TALCUM	++
PH 11	+	SOAP	++
PH 12	+	HARD SURFACE CLEANER	++
ACID CLEANER LIQUID	+	DETERGENT (+TAED)	+
ACID CLEANER SOLID	+	DETERGENT PERBORATE	+
TILE CLEANER	++	SOFTENING AGENT	+
CREAM RINSE	++	COLD WAVE	-
DEO STICK	++		

WGK Germany : 2



**Also level of metals as follows**

Copper <30ppm

Arsenic <1.1 ppm

Tin <250ppm

Zinc <50ppm

Cadmium <1.5 ppm

Mercury 1 PPM

Lead <2.5 PPM

Methyl Mercury calculated as element <0.25 ppm