



# JAYSHREE AROMATICS PVT LTD

(100% EOU)

(Manufacturers of Aromatics & Fine Chemicals)

PLOT NO.: 4705/1/3, G.I.D.C., ANKLESHWAR- 393 002,  
DIST. BHARUCH, (GUJARAT) INDIA

\* PHONE: 91-2646-224211, \* FAX: 91-2646-252718

E-mail: [info@jayshreeind.com](mailto:info@jayshreeind.com)

Website: [www.jayshreeind.com](http://www.jayshreeind.com)

## PRODUCT INFORMATION PHENYL ETHYL FORMATE

### 1.0 IDENTIFICATION OF THE SUBSTANCE/PREPARATION AND OF THE COMPANY/UNDERTAKING

#### Product Name

PHENYL ETHYL FORMATE

#### Chemical Name of Active

2-PHENETHYL FORMATE

**Manufacturer :** Jayshree Aromatics Pvt Ltd  
,plot no..4705/1/3 GIDC Estate, Ankleshwar-393002.  
District Bharuch . Gujarat.  
Phone no. 91-2646-22411  
Fax- 91-2646-252718  
Email : [info@jayshreeind.com](mailto:info@jayshreeind.com)

#### Emergency Telephone number:-

Ankleshwar-91-2646-224211  
Cell phone -09825031954

### 2.0 PRODUCT IDENTIFICATION & COMPOSITION/INFORMATION ON INGREDIENTS

#### Synonyms

2-Fenylethylester kyseliny mravenci  
2-Fenylethylester kyseliny mravenci [Czech]  
2-Phenethyl formate  
2-Phenethyl methanoate  
2-Phenylethyl formate  
4-06-00-03073 (Beilstein Handbook Reference)  
A13-18542  
BRN 2044524  
Benzeneethanol, formate  
Benzylcarbonyl formate  
Benzylcarbonyl methanoate  
Formic acid, 2-phenylethyl ester  
Formic acid, phenethyl ester  
NSC 404456

### 3.0 PHYSICAL CHEMICAL PROPERTIES

**Appearance** :- clear mobile colorless liquid

**Occurrence in nature:-** :- However ,it is a Synthesized chemical

**Odor:** - , Green, Herbaceous Rosy, floral odour.

**Flavours:-** .Pleasant fresh,fruity,strawberry

**Solubility:** 1 in 6 (60% Alcohol)

**Relative Density@25°C** 1.056 – 1.066

**Refractive Index@20°C** 1,5060 - 1,5100

**% volatile by volume:-** 100%

**Typical Purity(GC)** Not less than 96%

**Ester content ;-** Not less than 97%

**Boiling point** 226 °C atmospheric

**Acid Value:-** < 1

**Vapor density (Air=1) :-** > 1

Phenethyl alcohol, formate  
Phenethyl formate  
Phenethyl formate (natural)  
Phenylethyl formate

CAS No. 104-62-1

Molecular wt :- 150.17

FEMA No. :- 2864

EINECS :- 203-220-7

CoE :- 350

USA Food & Drug Act Title 21 CFR Paragraph  
172.515

JECFA number 988

FL Number 09.083

Chemical Formula :- C9 H10 O2

HS No. :- 2915.13.0000

Beilstein Number/ /Gmelin 2044524

MDL number: MFCD00021046

PubChem Substance ID 24901356

RTECS : LQ9400000

UN (DOT) : 1993

BEILSTEIN REFERENCE  
4-06-00-03073

NIH PubChem CID : 7711

CANADA DSL/NDL DSL

US TSCA Listed

AUSTRALIA AICS Listed

NEW ZEALAND Listed

JAPAN ENCS (MITI) Listed

Flash Point:- 91 °C

Melting point :- - °C

#### 4.0 OTHER INFORMATION

**Standard Packing size:**-5.0 kgs,35 kgs &215 Kgs

**Packing material compatibility details:-**

Compatible with Good HDPE, Galvanized Iron drums, HDPE Carboys, Aluminium Cans, composite drums

**Head Space:**-As low as possible

**Product Use** :- this ester is excellent modifier in Muguet, Orchid, Lilac,Rose,Narcisse,Hycinth,its dry foliage floral odour is very natural & hence different effects to a fragrance

In flavors, it finds use mainly in berry compositions & also in Apple, Apricot, Banana, Cherry, Honey, Peach, Pear, and Plum Etc.

**Use Level:**- fragrance up to 5 %  
Flavours up to 15 ppm

Tenacity: >60 hrs

**Stability:** - Keep in tightly closed container in a cool and dry place, protected from light.  
When stored for more than 12 month's quality should be checked before use.

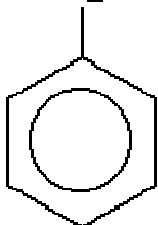
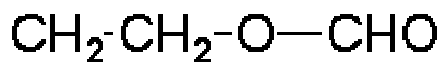
KOREA ECL Listed

PHILIPPIENS PICCS Listed

FOOD CHEMICALS CODEX LISTED yes

logP (o/w) : 1.96

WGK Germany : 2



PH 1	-	ANTIPERSPIRANT	++
PH 2	-	FABRIC SOFTENER	++
PH 3	+	ALCOHOLIC LOTION	++
PH 4	++	HAND CREAM	++
PH 5	++	LIQUID DETERGENT	+
PH 6	++	SHAMPOO	++
PH 7	++	AEROSOL	++
PH 8	++	FOAM BATH	++
PH 9	++	BLEACHING AGENT	+
PH 10	+	TALCUM	++
PH 11	-	SOAP	-
PH 12	-	HARD SURFACE CLEANER	-
ACID CLEANER LIQUID	-	DETERGENT (+TAED)	+
ACID CLEANER SOLID	-	DETERGENT PERBORATE	+
TILE CLEANER	-	SOFTENING AGENT	+
CREAM RINSE	++	COLD WAVE	-
DEO STICK	++		

.Copper <30ppm

Arsenic<1.1 ppm

Tin <250ppm

Zinc <50ppm

Cadmium <1.5 ppm

Mercury 1 PPM

Lead <2.5 PPM

Methyl Mercury calculated as element <0.25 ppm