

JAYSHREE AROMATICS PVT LTD

(100% EOU)

(Manufacturers of Aromatics & Fine Chemicals)

PLOT NO.: 4705/1/3, G.I.D.C., ANKLESHWAR- 393 002,
DI5T. BHARUCH, (GUJARAT) INDIA

* PHONE: 91-2646-224211, * FAX: 91-2646-252718

E-mail: info@jayshreeind.com

Website: www.jayshreeind.com

PRODUCT INFORMATION PARA CRESYL METHYL ETHER

1.0 IDENTIFICATION OF THE SUBSTANCE/PREPARATION AND OF THE COMPANY/UNDERTAKING

Product Name:-

Chemical Name of Active Ingredient(s) :-

PARA CRESYL METHYL ETHER

Manufacturer : Jayshree Aromatics Pvt Ltd plot
no..4705/1/3 GIDC Estate, Ankleshwar-393002.

District Bharuch. Gujarat.

Phone no. 91-2646-22411

Fax- 91-2646-252718

Email : info@jayshreeind.com

Emergency Telephone number:-

Ankleshwar-91-2646-224211

Cell phone -09825031954

2.0 PRODUCT IDENTIFICATION & COMPOSITION/INFORMATION ON INGREDIENTS

Synonyms.

1-Methoxy-4-methylbenzene

4-Methyl anisole

1-Methoxy-4-methylbenzene

1-Methyl-4-methoxybenzene

4-Methoxytoluene

4-Methyl-1-methoxybenzene

4-Methylanisole

4-Methylphenol methyl ether

AI3-07621

Anisole

p-methyl- , Benzene

1-methoxy-4-methyl-

HSDB 5363

Methyl 4-methylphenyl ether

Methyl p-cresol

Methyl p-cresyl ether

3.0 PHYSICAL CHEMICAL PROPERTIES

Appearance :- clear mobile colorless liquid

Occurrence in nature:- However ,it is a Synthesized
chemical

Odor description: - naphthyl cresol powdery nutty
Sweet, Aromatic, Phenolic, Nutty, Ylang ylang ,
Hyacinth

Wallflower like floral odour. Greener & more fruity
when

Diluted resembling Marigold

Flavors:- Sweet-fruity, spicy

Solubility:- 1:3 in 70% Alcohol

Relative Density@20°C 0.996 To 1.004

RefractiveIndex@20°C :- 1,5120 - 1,5140

% volatile by volume:- 100%

Ether Content:- > 99%

Typical Purity(GC) :- > 99

Acid Value:- < 1

Boiling point:- 174 °C

Melting Point :- -36 °C

Vapor density (Air=1) :- 4.2

Flash Point:- >59 °C

Solubility in water : Very slightly soluble

Methyl p-methylphenyl ether
 Methyl p-tolyl ether
 Methyl-para-cresol
 NSC 6254
 Toluene, 4-methoxy-
 UNII-10FAI0OR9W
 p-Cresol methyl ether
 p-Cresyl methyl ether
 p-Methoxytoluene
 p-Methylanisole
 p-Tolyl methyl ether
 para-Cresyl methyl ether
 para-Methoxytoluene
 para-Methylanisole

CAS No. 104-93-8

Molecular wt :- 122.17

FEMA No. :- 2681

EINECS :- 203-253-7

CoE :- 188

USA Food & Drug Act Title 21 CFR Paragraph
 172.515

JECFA number 1243

FL Number 04.015

Chemical Formula :- C₈H₁₀O

HS No. :- 2909 30 9000

Beilstein Number/ /Gmelin 1237336

MDL number: MFCD00008413

PubChem Substance ID 24848881

NIH PubChem CID : 7731

RTECS : BZ8780000

WHMIS (Canada): Not Available

UN (DOT) : 1993

BEILSTEIN REFERENCE 4-06-00-02098

4.0 OTHER INFORMATION

Standard Packing size:-5.0 kgs,30 kgs &215 kgs

Packing material compatibility details:-

Compatible with
 M.S, Lacquered lined, Good HDPE, Galvanized
 Iron drums, HDPE Carbouys, Aluminium Cans.

Head Space:-As low as possible

Product Use :- This ester is used for low cost floral notes
 For Jasmin, Broom. Lilac. This chemical works well in soaps.

The ester is used in flavor compositions for imitation Nut, Black Walnut, Maple, Berry etc.

Tenacity:-< 8 Hour

Use Level: - 2% Fragrance Flavors up to 20 PPM

Stability: - Keep in tightly closed container in a cool and dry place, protected from light.
 When stored for more than 12 months quality should be checked before use...

PH 1	++	ANTIPERSPIRANT	++
PH 2	++	FABRIC SOFTENER	++
PH 3	++	ALCOHOLIC LOTION	++
PH 4	++	HAND CREAM	++
PH 5	++	LIQUID DETERGENT	++
PH 6	++	SHAMPOO	++
PH 7	++	AEROSOL	++
PH 8	++	FOAM BATH	++
PH 9	++	BLEACHING AGENT	+
PH 10	++	TALCUM	++
PH 11	+	SOAP	++
PH 12	-	HARD SURFACE CLEANER	+
ACID CLEANER LIQUID	++	DETERGENT (+TAED)	++
ACID CLEANER SOLID	++	DETERGENT PERBORATE	++
TILE CLEANER	++	SOFTENING AGENT	++
CREAM RINSE	++	COLD WAVE	++
DEO STICK	++		

CANADA DSL/NDL DSL

US TSCA Listed

AUSTRALIA AICS Listed

NEW ZEALAND Listed

JAPAN ENCS (MITI) Listed

_KOREA ECL Listed

PHILIPPIENS PICCS Listed

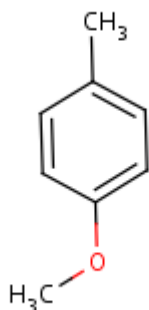
FOOD CHEMICALS CODEX LISTED yes

logP (o/w) : 2.59

Swiss Giftliste 1 : G-5824

WGK Germany : 1

JAPL CODE OF PRODUCT : P0018



Also level of metals as follows

Copper <20ppm

Arsenic<1.1 ppm

Tin <250ppm

Zinc <40ppm

Cadmium <1 ppm

Mercury 1 PPM

Lead <1 PPM

Methyl Mercury calculated as element <0.25 ppm