



JAYSHREE AROMATICS PVT LTD

(100% EOU)

(Manufacturers of Aromatics & Fine Chemicals)

PLOT NO.: 4705/1/3, G.I.D.C., ANKLESHWAR- 393 002,
DI5T. BHARUCH, (GUJARAT) INDIA

* PHONE: 91-2646-224211, * FAX: 91-2646-252718

E-mail: info@jayshreeind.com

Website: www.jayshreeind.com

PRODUCT INFORMATION

METHYL BENZOATE

1.0 IDENTIFICATION OF THE SUBSTANCE/PREPARATION AND OF THE COMPANY/UNDERTAKING

Product Name METHYL BENZOATE

Chemical Name of Active :-
METHYL BENZENE CARBOXYLATE

Manufacturer :

Jayshree Aromatics Pvt Ltd
plot no..4705/1/3 GIDC Estate, Ankleshwar-393002.
District Bharuch . Gujarat.
Phone no. 91-2646-22411
Fax- 91-2646-252718
Email : info@jayshreeind.com

Emergency Telephone number:-
Ankleshwar-91-2646-224211
Cell phone -09825031954

2.0 PRODUCT IDENTIFICATION & COMPOSITION/INFORMATION ON INGREDIENTS

Synonyms.-

Methyl benzoate

AI3-00525

Benzoic acid, methyl ester

CCRIS 5851

Clorius

Clorius (VAN)

Essence of niobe

HSDB 5283

Methyl benzenecarboxylate

Methyl benzoate

Methyl benzoate (natural)

Methylbenzoate

Methylester kyseliny benzoove

Methylester kyseliny benzoove [Czech]

NSC 9394

Niobe oil

3.0 PHYSICAL CHEMICAL PROPERTIES

Appearance :- colorless clear liquid

Occurrence in nature:- :- However ,it is a Synthesized chemical

Odor: Strong phenolic, similar to cresol/wintergreen oil, sweet- pungent, floral like ylang, fruity undertone resembles prunes & black current & heavy floral notes of tube rose.

Flavours:- heavy sweet, slightly floral-fruity note (berry, cherry), medicinal-balsamic, in dilution slightly fruity

Solubility: 1 : 4 V/V 60 % Ethyl Alcohol

Relative Density@25°C :- 1.082 TO 1.089

Refractive Index@20°C :- 1.5140 TO 1.5190

% volatile by volume:- 100%

Typical Purity(GC) Not less than 99%

Ester content ;:- Not less than 99%

Boiling point :- 199.00 °C. @ 760.00 mm Hg

Acid Value:- < 1

Vapor density (Air=1) 4.68

Oil of niobe
UNII-6618K1VJ9T

CAS No. 93-58-3

Molecular wt :- 136.15

FEMA No. :- 2683

EINECS :- 202-259-7

CoE :- 260

USA Food & Drug Act Title 21 CFR Paragraph
172.515

JECFA number 851

FL Number 09.725

Chemical Formula :- C₈ H₈ O₂

HS No. :- 2916.31.30

Beilstein Number/ /Gmelin 1072099

MDL number: MFCD00008421

PubChem Substance ID 24901249

NIH PubChem CID : 7150

RTECS : DH3850000

WHMIS (Canada): CLASS B-3: Combustible liquid with a flash point between 37.8°C (100°F) and 93.3°C (200°F).

Swiss Giftliste 1 : G-1233

MERCK : 12,6104

BEILSTEIN REFERENCE 4-09-00-00283

CANADA DSL/NDL DSL

US TSCA Listed

AUSTRALIA AICS Listed

Flash Point:- >83 °C

Melting point :- - 12.00 °C. @ 760.00 mm Hg

4.0 OTHER INFORMATION

Standard Packing size:-5.0 kgs,35 kgs &210 kgs

Packing material compatibility details:-

Compatible with Good HDPE, Galvanized Iron drums, HDPE Carboys, Aluminium Cans.

Head Space:-As low as possible

Product Use :- Preservative, skin conditioner in cosmetics; fragrance in perfumes; dyestuffs intermediate; solvent for cellulose esters and ethers, resins, rubber; synthetic flavoring agent in foods and pharmaceuticals

This chemical widely used for perfumes & floral bases it is conventional ingredient in Peau d Espagne, Ylang ylang bases

Due to low cost a ingredient of detergent fragrance, Masking odors & Industrial perfumes. It blends well with benzyl acetate , cinnamic alcohol, Cresyl products & methyl anthranilate & most of spice oils.

The Ester is also extensively used in flavor compositions for imitation strawberry, pineapple, rum, vanilla and in fruit complexes, liquor flavors, nut flavors etc.

Useful in: brown nuts, vanilla, savory spices, fruity red, fruity yellow, fruity tropical, sweet others, alcoholics.

Use Level:- fragrance up to 4 %
Flavours up to 60 ppm

Tenacity:->4 HRS

Stability: - Keep in tightly closed container in a cool and dry place, protected from light.

When stored for more than 12 month's quality should be checked before use.

NEW ZEALAND Listed

JAPAN ENCS (MITI) Listed

KOREA ECL Listed

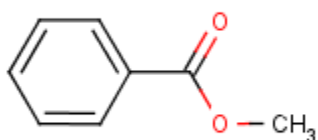
PHILIPPIENS PICCS Listed

FOOD CHEMICALS CODEX LISTED yes

logP (o/w) : 2.2

JAPL CODE OF PRODUCT : M0001

Molecular Structure :-



PH 1	-	ANTIPERSPIRANT	++
PH 2	+	FABRIC SOFTENER	++
PH 3	+	ALCOHOLIC LOTION	++
PH 4	++	HAND CREAM	++
PH 5	++	LIQUID DETERGENT	++
PH 6	++	SHAMPOO	++
PH 7	++	AEROSOL	++
PH 8	++	FOAM BATH	++
PH 9	++	BLEACHING AGENT	-
PH 10	+	TALCUM	++
PH 11	-	SOAP	++
PH 12	-	HARD SURFACE CLEANER	+
ACID CLEANER LIQUID	-	DETERGENT (+TAED)	+
ACID CLEANER SOLID	-	DETERGENT PERBORATE	+
TILE CLEANER	-	SOFTENING AGENT	++
CREAM RINSE	++	COLD WAVE	-
DEO STICK	++		

Also level of metals as follows

Copper <30ppm

Arsenic<1.1 ppm

Tin <250ppm

Zinc <50ppm

Cadmium <1.5 ppm

Mercury 1 PPM

Lead <2.5 PPM

Methyl Mercury calculated as element <0.25 ppm