

JAYSHREE AROMATICS PVT LTD

(100% EOU)

(Manufacturers of Aromatics & Fine Chemicals)

PLOT NO.: 4705/1/3, G.I.D.C., ANKLESHWAR- 393 002,
DI5T. BHARUCH, (GUJARAT) INDIA

* PHONE: 91-2646-224211, * FAX: 91-2646-252718

E-mail: info@jayshreeind.com

Website: www.jayshreeind.com

PRODUCT INFORMATION ISO BUTYL FORMATE

1.0 IDENTIFICATION OF THE SUBSTANCE/PREPARATION AND OF THE COMPANY/UNDERTAKING

Product Name:-

Chemical Name of Active Ingredient(s) :-

2-METHYLPROPYL FORMATE

Manufacturer : Jayshree Aromatics Pvt Ltd plot
no..4705/1/3 GIDC Estate, Ankleshwar-393002.

District Bharuch. Gujarat.

Phone no. 91-2646-22411

Fax- 91-2646-252718

Email : info@jayshreeind.com

Emergency Telephone number:-

Ankleshwar-91-2646-224211

Cell phone -09825031954

2.0 PRODUCT IDENTIFICATION & COMPOSITION/INFORMATION ON INGREDIENTS

Synonyms.

Isobutyl formate

2-Methyl-1-propyl formate

2-Methylpropyl formate

4-02-00-00029 (Beilstein Handbook Reference)

AI3-24240 , BRN 1738888

Formic acid, 2-methylpropyl ester

Formic acid, isobutyl ester

Iso-butyl formate

Isobutyl formate (natural)

Isobutyl methanoate

Isobutyl methanoate

Isobutylester kyseliny mravenci

Isobutylester kyseliny mravenci [Czech]

NSC 6968

Tetryl formate

UNII-6OCL1KXH0Q

3.0 PHYSICAL CHEMICAL PROPERTIES

Appearance :- clear mobile colorless liquid

Occurrence in nature:-However ,it is a
Synthesized chemical

Odor description: - Mild, Sweet, Fruity, Pleasant
Ethereal odour Reminiscent of Rum & Raspberries

Flavors:- Fruity, Slight sweet, fresh

Solubility:- 1:5 in 70% Alcohol

Relative Density@25°C 0.876 To 0.886

Density : 885 kg/m³

RefractiveIndex@20°C :- 1,3830 to 1.3900

% volatile by volume:- 100%

Ester Content:- > 98%

Typical Purity(GC) :- > 97

Acid Value:- < 1

Boiling point:- 98 °C

Melting Point :- -96 °C

Vapor density (Air=1) :- 3.52

Flash Point:- >10 °C

Solubility in water : 1 g/100 mL (22 °C)

4.0 OTHER INFORMATION

Formic acid, 2-methylpropyl ester
Formic acid, isobutyl ester
Isobutyl formate ,
Isobutyl formate [UN2393] [Flammable liquid]
UN2393

CAS No. 542-55-2

Molecular wt :- 102.13

FEMA No. :- 2197

EINECS :- 208-818-1

CoE :- 502

USA Food & Drug Act Title 21 CFR Paragraph
172.515

CEE: 607-017-00-8

JECFA number 124

FL Number 09.164

Chemical Formula :- C₅H₁₀O₂

HS No. :- 2915 13 0000

Beilstein Number/ /Gmelin 1738888

MDL number: MFCD00003293

PubChem Substance ID 24849770

NIH PubChem CID : 10957

RTECS : LQ8650000

WHMIS (Canada): Not Available

MERCK : 12,5157

UN (DOT) : 2393

BEILSTEIN REFERENCE 4-02-00-00029

CANADA DSL/NDL DSL

US TSCA Listed

AUSTRALIA AICS Listed

Standard Packing size:-5.0 kgs,30 kgs &180 kgs

Packing material compatibility details:-

Compatible with
M.S, Lacquered lined, Good HDPE, Galvanized
Iron drums, HDPE Carboys, Aluminium Cans.

Head Space:-As low as possible

Product Use :- This ester is occasionally used
in perfume compositions as Modifier for good top
notes & to lift it further

The ester is used widely in flavor compositions for
Raspberry, Rum & many other fruit flavors.
For imitation Whisky Flavor & Liquor

Tenacity:-< 1 Hour

Use Level: - 1% Flavors up to 20 PPM

Stability: - Keep in tightly closed container in a
cool and dry place, protected from light.
When stored for more than 12 months quality
should be checked before use...

PH 1	-	ANTIPERSPIRANT	+
PH 2	-	FABRIC SOFTENER	+
PH 3	-	ALCOHOLIC LOTION	++
PH 4	-	HAND CREAM	++
PH 5	+	LIQUID DETERGENT	+
PH 6	++	SHAMPOO	+
PH 7	++	AEROSOL	++
PH 8	++	FOAM BATH	+
PH 9	++	BLEACHING AGENT	-
PH 10	+	TALCUM	++
PH 11	-	SOAP	+
PH 12	-	HARD SURFACE CLEANER	-
ACID LIQUID CLEANER	-	DETERGENT (+TAED)	+
ACID SOLID CLEANER	-	DETERGENT PERBORATE	+
TILE CLEANER	-	SOFTENING AGENT	+
CREAM RINSE	+	COLD WAVE	-
DEO STICK	+		

NEW ZEALAND Listed

JAPAN ENCS (MITI) Listed

_KOREA ECL Listed

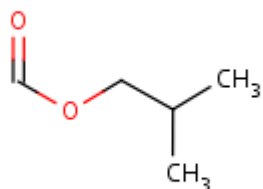
PHILIPPIENS PICCS Listed

FOOD CHEMICALS CODEX LISTED No

logP (o/w) : 1.23

WGK Germany : 2

JAPL CODE OF PRODUCT : I0029



Also level of metals as follows

Copper <20ppm

Arsenic <1.1 ppm

Tin <250ppm

Zinc <40ppm

Cadmium <1 ppm

Mercury 1 PPM

Lead <1 PPM

Methyl Mercury calculated as element <0.25 ppm