



# JAYSHREE AROMATICS PVT LTD

(100% EOU)

(Manufacturers of Aromatics & Fine Chemicals)

PLOT NO.: 4705/1/3, G.I.D.C., ANKLESHWAR- 393 002,  
DIST. BHARUCH, (GUJARAT) INDIA

\* PHONE: 91-2646-224211, \* FAX: 91-2646-252718

E-mail: [info@jayshreeind.com](mailto:info@jayshreeind.com)

Website: [www.jayshreeind.com](http://www.jayshreeind.com)

## PRODUCT INFORMATION GAMMA METHYL IONONE 70

### 1.0 IDENTIFICATION OF THE SUBSTANCE/PREPARATION AND OF THE COMPANY/UNDERTAKING

**Product Name:**

METHYL IONONE (GAMMA)

**Chemical Name of Active Ingredient(s) :-** 3-BUTEN-2-ONE,3-METHYL-4-(2,6,6-TRIMETHYL-2-CYCLOHEXEN-1-YL)

**Manufacturer :** Jayshree Aromatics Pvt Ltd  
,plot no..4705/1/3 GIDC Estate, Ankleshwar-393002.  
District Bharuch . Gujarat.  
Phone no. 91-2646-22411  
Fax- 91-2646-252718  
Email : [info@jayshreeind.com](mailto:info@jayshreeind.com)

**Emergency Telephone number:-**

Ankleshwar-91-2646-224211  
Cell phone -09825031954

### 2.0 PRODUCT IDENTIFICATION & COMPOSITION/INFORMATION ON INGREDIENTS

**Synonyms :-**

3-Buten-2-One,3-Methyl-4-(2,6,6-Trimethyl-2-Cyclohexen-1-yl),  
4-(2,6,6-Trimethyl-2-Cyclohexen-1-yl)-3-Methyl-3-Buten-2-One and 1-(2,6,6-Trimethyl-2-Cyclohexen-1-yl)-1-Penten-3-one,  
Alpha-iso-Methylionone and Alpha-n-Methyl ionone;  
Gamma-Methyl ionone and Alpha-Methyl ionone,  
Iraldeine Gamma.,  
Noviraldiol.  
Raldeine Gamma.  
Gammanolene  
Irisantheme  
alpha-Isomethyl ionone  
iso-alpha-methyl ionone

### 3.0 PHYSICAL CHEMICAL PROPERTIES

**Appearance :-** Clear pale yellowish liquid

**Occurrence in nature:-**However ,it is a Synthesized chemical

**Odor description:-** Flowery, Orris, Woody, Fruity Mild, , Violet.

**Flavor:-** Fruity

**Solubility:-** 1:4 in 70% Alcohol

**Relative Density@25°C:-** 0.914~0.935

**Refractive Index@20°C :-** 1.4970~1.5030

**% volatile by volume:-** 100%

**Ketone Content:-**Not less than 95%

**Typical Purity(GC) :-** Not less than 60.0 % Alpha iso-methyl ionone isomer

**Acid Value:-** Not more than 1

**Boiling point:-**122 °C at 9 mm HG

**Melting Point:-** -

gamma-methyl ionone (so called)  
methyl ionone gamma A  
methyl ionone gamma supreme  
(E)-3-methyl-4-(2,6,6-trimethyl-1-cyclohex-2-enyl)but-3-en-2-one  
3-methyl-4-(2,6,6-trimethyl-2-cyclohexen-1-yl)-3-buten-2-one  
Raldeine gamma  
4,2,6,6-trimethyl-2-cyclohexen-1-yl-3-methyl-3-buten-2-one

CAS No. 127-51-5

Molecular wt :- 206.32

FEMA No. :- 2714

EINECS :- 204-846-3

CoE :- 169

USA Food & Drug Act Title 21 CFR Paragraph  
172.515

JECFA number 404

FL Number 07.036

Chemical Formula :- C<sub>14</sub>H<sub>22</sub>O

HS No. :- 2914 23 0000

MDL number: MFCD00034582

PubChem Substance 24889812

**WHMIS (Canada):** Not Available

**CANADA DSL/NDL** DSL

**US TSCA** Listed

**AUSTRALIA AICS** Listed

**NEW ZEALAND** Listed

**JAPAN ENCS (MITI)** Listed

**KOREA ECL** Listed

**Vapor density (Air=1) :-> 1**

**Flash Point:-124 °C**

#### **4.0 OTHER INFORMATION**

**Standard Packing size:-5.0 kgs,30 kgs &195kgs**

#### **Packing material compatibility details:-**

Compatible with Good HDPE, Galvanized Iron drums, HDPE Carboys, Aluminium Cans. MS lacquered lined.

**Head Space:-As low as possible**

**Product Use :** It is often used in flowery, woody, spicy and oriental accords. Brings volume and diffusion to compounds, as well as a skin care effect and good overall substantivity. a very attractive "creamy" top note  
And a most uniform, powdery-sweet dry out performance. This type of Methyl ionone can support floral notes in Ylang-Ylang as well as woody notes in Vetiver, or leathery Notes in Salicylates, etc.

The subject material finds some use in flavor compositions, not only in many berry types and Violet and other floral, but in Pineapple, Muscatel, Nut, Pistachio, fruit complexes, etc.

**Tenacity:->24 HRS**

**Use Level:-** fragrance up to 25 %  
Flavours up to 10 PPM

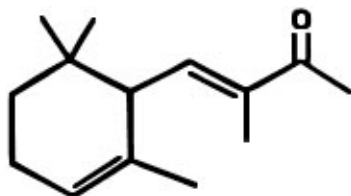
**Stability:-** Keep in tightly closed container in a cool and dry place, protected from light.  
When stored for more than 12 months quality should be checked before use

PHILIPPIENS PICCS Listed

**FOOD CHEMICALS CODEX LISTED** No

**logP (o/w)** : 4.41

**WGK Germany** : 2



PH 1	+	ANTIPERSPIRANT	++
PH 2	+	FABRIC SOFTENER	++
PH 3	++	ALCOHOLIC LOTION	++
PH 4	++	HAND CREAM	++
PH 5	++	LIQUID DETERGENT	++
PH 6	++	SHAMPOO	++
PH 7	++	AEROSOL	+
PH 8	++	FOAM BATH	++
PH 9	++	BLEACHING AGENT	-
PH 10	++	TALCUM	++
PH 11	+	SOAP	++
PH 12	-	HARD SURFACE CLEANER	++
ACID CLEANER LIQUID	+	DETERGENT (+TAED)	++
ACID CLEANER SOLID	+	DETERGENT PERBORATE	++
TILE CLEANER	+	SOFTENING AGENT	++
CREAM RINSE	++	COLD WAVE	+
DEO STICK	++		

**Also level of metals as follows**

Copper <30ppm  
Arsenic <1.1 ppm  
Tin <250ppm  
Zinc <50ppm  
Cadmium <1.5 ppm  
Mercury 1 PPM  
Lead <2.5 PPM